



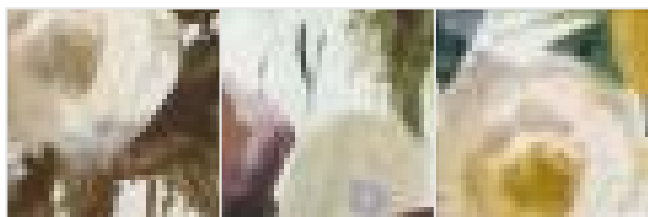
RUBELLI



Product scan (≈20x20 cm) or picture



Full width simulation (≈130 cm)



PARDES

A30065

Print. Welcome into the garden – “pardes” in Hebrew. This multicoloured print on a large scale is taken from a contemporary artwork, painted using the watercolour technique. It has been printed on a compact satin ground with added “movement” thanks to special technical methods. These, in addition to giving the surface an irregular relief, also influence the large patches of colour, making the pattern more vibrant. The digital print allows those soft colour changes typical of watercolours to be reproduced and make Pardes a lush and luxurious garden.

Stampato. Benvenuti in giardino, in ebraico “pardes”. Questo stampato policromo in grande scala è tratto da un bozzetto contemporaneo dipinto con la tecnica dell’acquerello. La stampa è stata eseguita su un fondo raso compatto e reso “mosso” grazie a particolari espedienti tecnici. Questi, oltre a conferire un rilievo irregolare alla superficie, influiscono anche sulle ampie macchie di colore rendendo il disegno più vibrante. La stampa digitale permette di riprodurre quei morbidi passaggi cromatici tipici dell’acquerello e che fanno di Pardes un giardino ricco e lussureggiante.

Imprimé. Bienvenu au jardin, « pardes » en hébreu. Cet imprimé polychrome à grand format est tiré d’un croquis contemporain peint selon la technique de l’aquarelle. L’impression a été effectuée sur fond de satin compact, auquel certaines techniques apportent du mouvement. Ces dernières, outre le fait de conférer un relief irrégulier à la surface, jouent également sur les amples taches de couleurs et rendent le motif plus dynamique. L’impression numérique permet de reproduire ces passages chromatiques subtils, typiques de l’aquarelle, qui font de Pardes un jardin riche et luxuriant.

COMPOSITION: 50%PL 42%PA 8%PC

USE: HEAVY USE

WIDTH: 130 cm

WEIGHT: 320 gr/m

VERTICAL REPEAT: 102 cm

HORIZONTAL REPEAT: 130 cm

