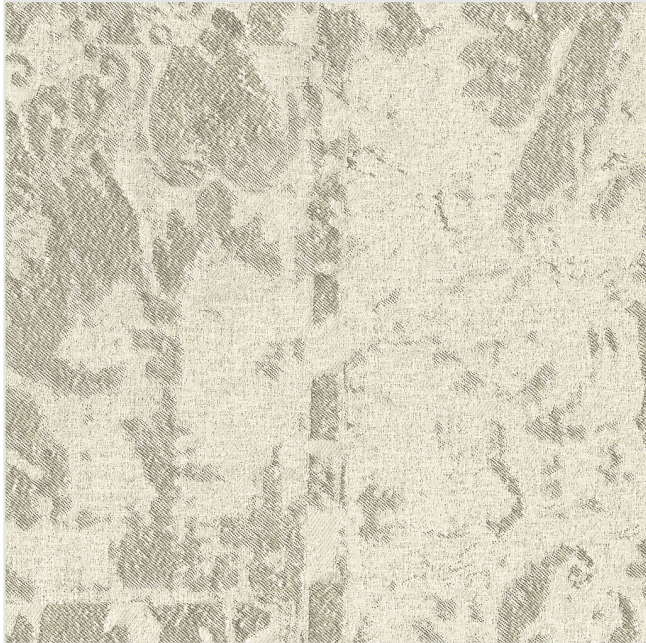




RUBELLI



Product scan (≈20x20 cm) or picture



Full width simulation (≈140 cm)



GRITTI

A30080

The simple juxtaposition of shiny and matte areas and contrasts of light and shade trace and compose the fragments of a seventeenth-century fabric in this lampas. The fragments of the original are elegantly arranged to form a sort of sophisticated patchwork with a refined romantic appearance. Upholstery fabric with a palette which ranges from neutrals to a classical colour scheme.

Lampasso in cui grazie al semplice contrapporsi di zone lucide ed opache e di contrasti di luce ed ombra, vengono delineati e composti i frammenti di un tessuto Seicentesco. I frammenti dell'originale vengono elegantemente disposti a formare una sorta di raffinato patchwork dal ricercato aspetto romantico. Tessuto per imbottiti dalla palette che spazia dai neutri a coloriture di sapore classico.

Sur ce lampas la simple opposition des zones claires et des zones opaques et les contrastes d'ombre et de lumière structurent et soulignent des empiècements de tissu inspirés du 17ème siècle. Ces pièces artistiquement disposées forment une sorte de patchwork raffiné à l'aspect romantique et recherché. Tissu pour tapisserie dont la palette va des tonalités neutres aux coloris classiques.

COMPOSITION: 38%CO 33%AC 29%CU

USE: NORMAL USE

WIDTH: 140 cm

WEIGHT: 340 gr/m

VERTICAL REPEAT: 81 cm

HORIZONTAL REPEAT: 70 cm

