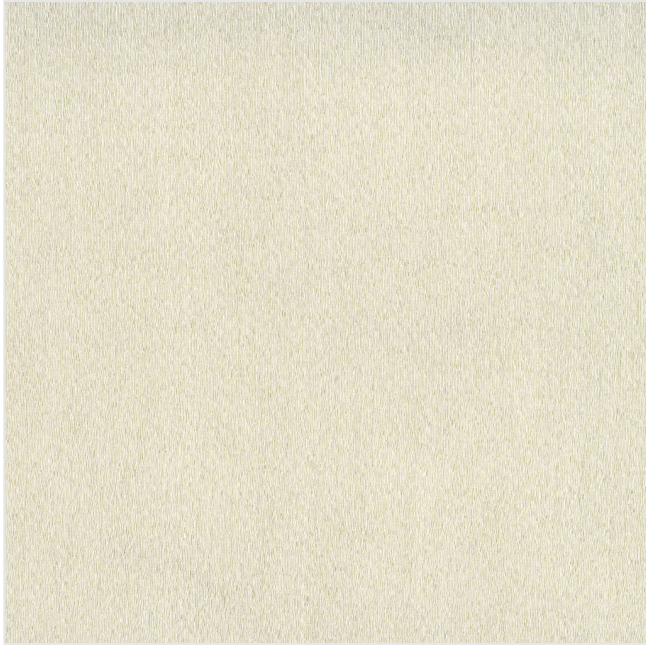
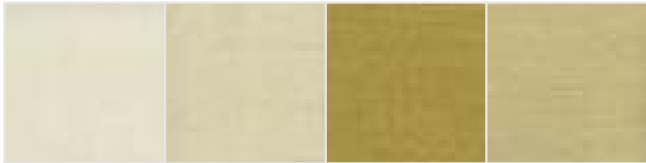




RUBELLI



Product scan (≈20x20 cm) or picture



## MINEKO

### A30102

Curtain fabric with a even textured surface covered by irregular diamond shapes raised from the ground. Luminosity and sophisticated transparencies add elegance to this curtain, its appearance transforms constantly as the light changes. A palette of four colour versions from candid white to cream, old gold and brown.

*Tenda la cui superficie è percorsa da una texture uniforme creata da irregolari losanghe in rilievo rispetto al fondo. Luminosità e raffinate trasparenze rendono elegante questa tenda il cui aspetto muta continuamente con il variare della luce. Palette formata da quattro varianti che vanno dal bianco candido al crema, all'oro vecchio, al marrone.*

Tenture dont la surface présente une texture uniforme créée par des losanges irréguliers en relief sur le fond. Sa luminosité et sa transparence confèrent toute son élégance à ce rideau dont l'aspect change continuellement en fonction de la lumière. Sa palette comporte quatre variantes: blanc pur, crème, vieil or et marron.

COMPOSITION: 100%PL TREVIRA CS

USE: DRAPERY

WIDTH: 310 cm

WEIGHT: 310 gr/m

