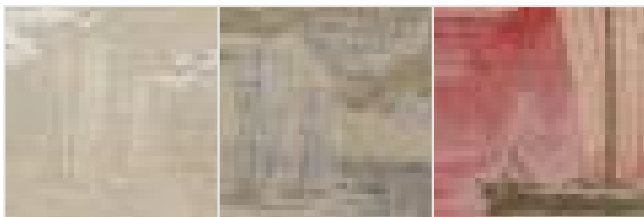




Product scan (≈20x20 cm) or picture



Full width simulation (≈135 cm)



## LAFAYETTE

### ATS076

Jacquard fabric woven on silk with precious chenille weft. The design - a landscape motif – takes inspiration from a Japanese handmade velvet dating back to the early 20th century, preserved in the Rubelli historical archive.

*Tessuto jacquard con ordito in seta e trama in ciniglia. Il disegno - un motivo paesaggistico - si ispira a un velluto a mano giapponese degli inizi del XX secolo e conservato nell'archivio storico Rubelli.*

Jacquard tissé sur soie avec une trame chenille. Le paysage qui constitue le motif s'inspire d'un velours japonais du début du 20ème siècle fait main, conservé aux archives Rubelli.

COMPOSITION:	51%PA 27%CO 14%SE 8%PC
--------------	---------------------------

USE:	LIGHT USE
------	-----------

WIDTH:	135 cm
--------	--------

WEIGHT:	610 gr/m
---------	----------

VERTICAL REPEAT:	105 cm
------------------	--------

HORIZONTAL REPEAT:	68 cm
--------------------	-------

